

HAIHONG

HAIHONG 海宏重工

科技创造未来

装载机中的宝马

CTX

SHANDONG HAIHONG HEAVY INDUSTRY CO., LTD.

Dongjing Road, Qingzhou, Shandong, China

0536-3533666

山东海宏重工有限公司

One
Year
Warranty



Global Dealers



CTX8010 Pro

Mini Excavator



Customizable
Colors



Weight: 1.25t
Chassis Width: 842-1060mm
Dimension: 2130x950x2368mm
Max. Digging Radius: 2292mm
Max. Digging Height: 3124mm
Max. Dump Height: 2174mm
Rated Power: 7.5-10Kw



5000 Units
Per Year
To Export

Multiple
Engine
Options

YANMAR
CHANGCHAI
KOOB



Swing
Arm

Various Attachments



Expandable track



Powder Coating



Attachments



Buckets



Tilt bucket



Rake



Grabber



Ripper



Auger drill



Jackhammer



MS01 Quick hitch

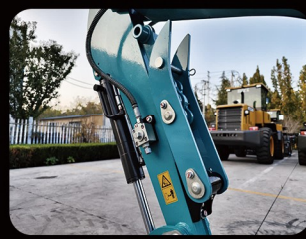


Sieve bucket

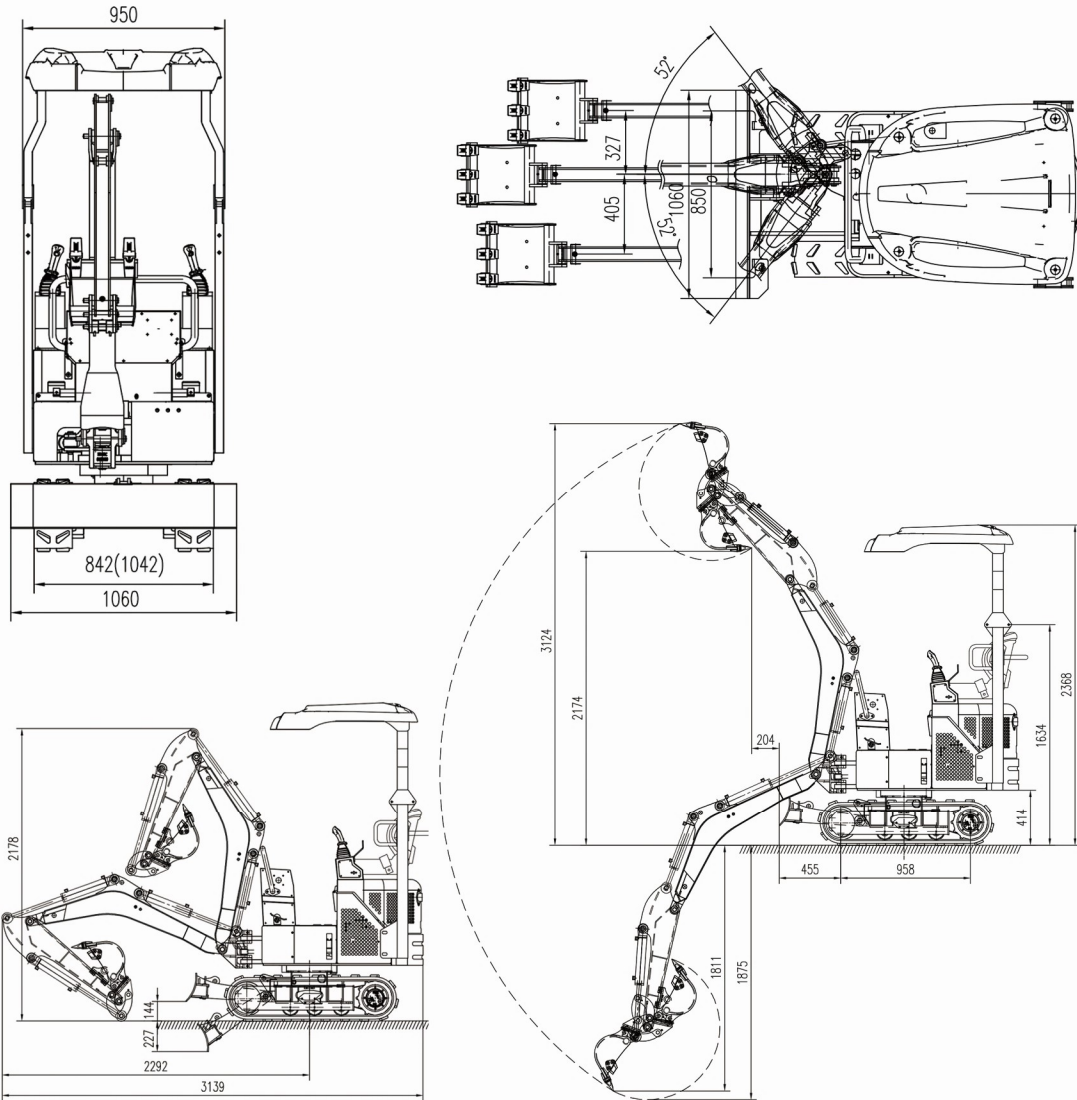


Quick hitches

Finishing



General Dimensions



Specifications

MODEL

CTX8010 Pro

PERFORMANCE		
Bucket capacity	m ³	0.03
Travel speed	Km/h	2.1/3.3 double speed
Drawbar pulling force	KN	9.77
Bucket digging force	KN	13.1
Arm crowding force	KN	6.95
GENERAL		
Machine Mass	kg	1,250
Ground Pressure	kPa	27
Track type		Rubber
Standard track width	mm	860
Adjustable track width	mm	842-1060
Total length of track	mm	1300
Individual track width		180
Engine		
Model		YANMAR 3TNV70-SSY
Type		4 cycle, 3-cylinder, Water-cooled
Power output	kW/rpm	10/2200
Max. Torque	N.m/rpm	51.9/1600
Displacement	L	0.854
Fuel Tank	L	10
HYDRAULIC SYSTEM		
Pump		Gear pump
Max Discharge Flow	ml/r	11.3
Relief Valve Setting	Mpa	18
Hydraulic Oil Tank	L	21
DOZER BLADE		
Width x Height	mm	860/1060 x 150
Working Ranges(height/depth)	mm	144/305
SIDE DIGGING MECHANISM		
Type		Boom swing
Offset Angle To the left	Degree	52
Offset Angle To the right	Degree	52
DIMENSIONS		
Max. Digging reach	mm	3,300
Max. digging depth	mm	1,875
Max. digging height	mm	3,124
Max. dumping clearance	mm	2,174
Min. dumping clearance	mm	864
Max. vertical wall digging depth	mm	1,811